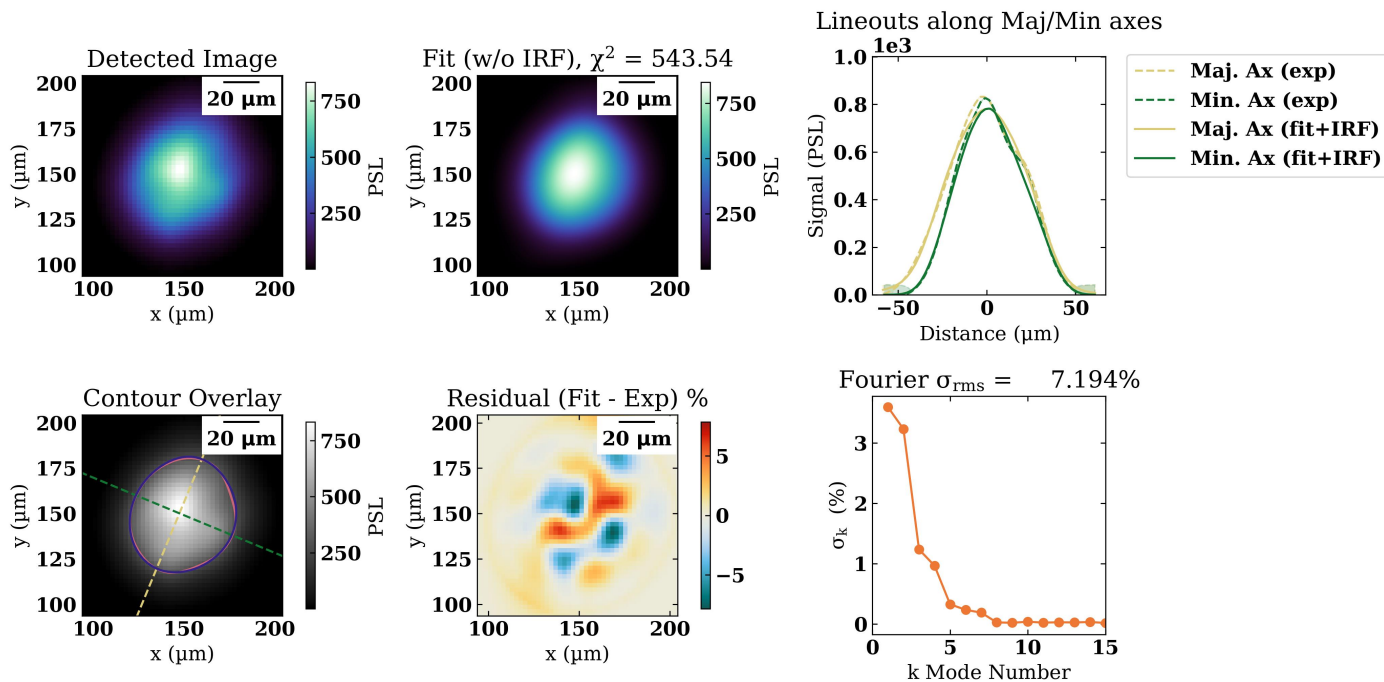


Results

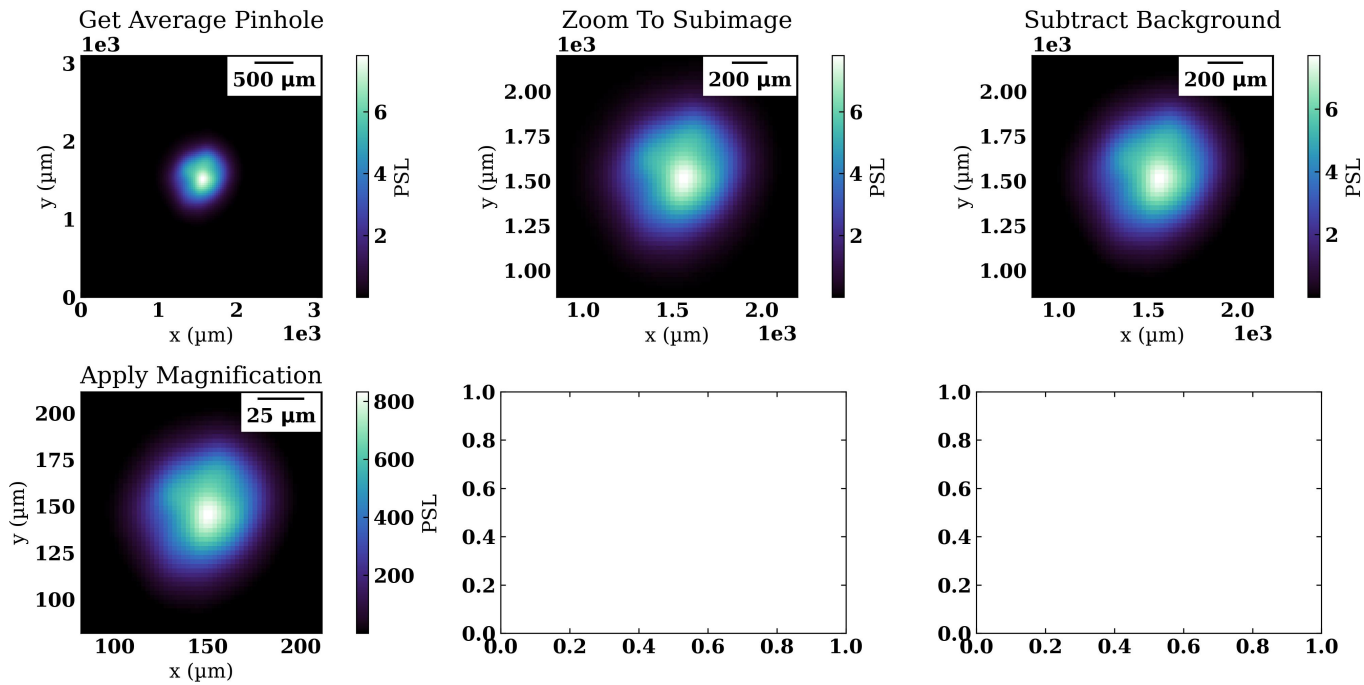
Parameter	Channel 1
Fit Metric	544
Amplitude	844 ± 0.334 PSL
Axial Ratio	1.17 ± 0.000214
Core Offset	2.34 ± 0.0525
L1 Angle	-0.594 ± 0.0307
L2 Angle	-1.96 ± 0.00307 rad
Major Axis	31.4 ± 0.00547 μm
Minor Axis	26.9 ± 0.00607 μm
Photon Yield	1.42e+04 ± 28.3 J
R0	28.9 ± 0.00496 μm
R17	35.7 ± 0.00353 μm
Supergaussian Exponent	2.2 ± 0.00248
X Center	148 ± 2.84e-14 μm
Y Center	150 ± 0.0899 μm

## TRXI IP 1 SG Fit

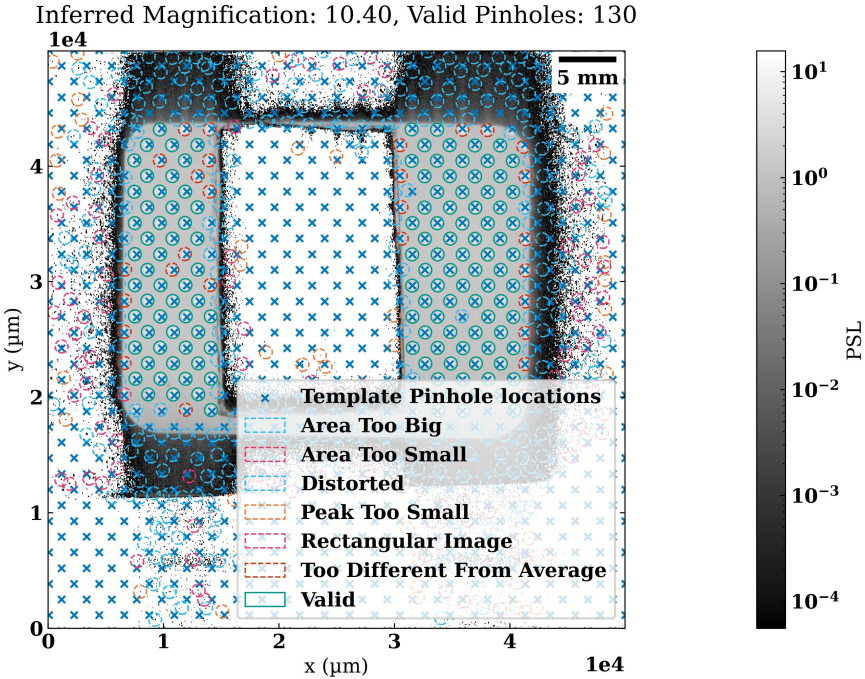


# TRXI IP 1

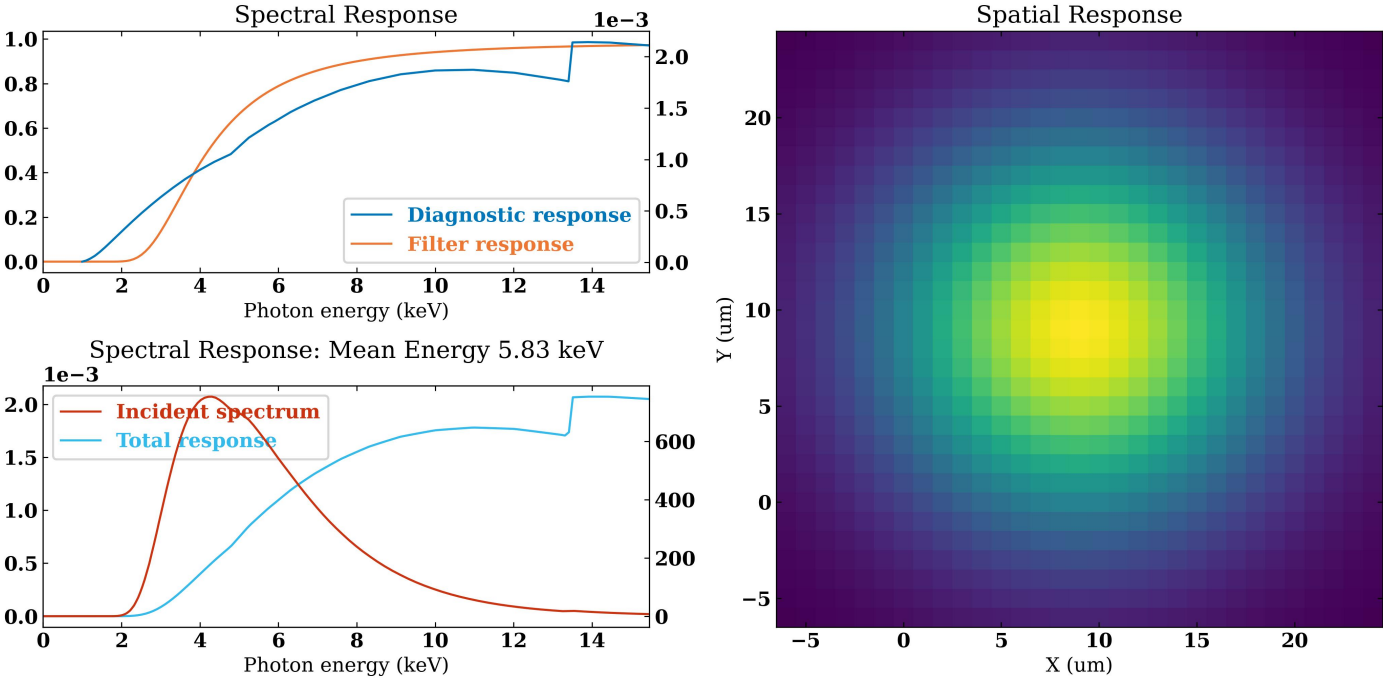
TRXI IP 1 Processing



# TRXI IP 1 Pinhole Locator Report



# TRXI IP 1 Response Functions



# TRXI IP 1 Fresnel Diffraction

Fresnel Diffraction for  $D = 5\text{ }\mu\text{m}$ ,  $M = 10.40$ ,  $R = 166\text{ mm}$

